

# Installation and maintenance Instructions

(Embedded type Lights )

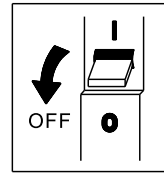


## Use notices(Consumer notices )

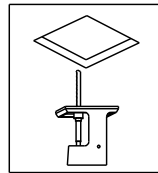
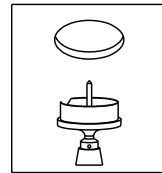
- 1.Thanks for choosing our products ,in order to protect your consumption right and personal safety ,please read this instruction carefully before use and keep this as the future reference .
- 2.This product should be installed together with fuse ,we suggest the installation and maintenance matters should be operated by the professional electrician .
- 3.Please select the appropriate power supply configuration according to the product technical specifications .
- 4.Please ensure the power had been cut off before installation .In order to prevent the electric shock ,please make sure the power supply can not be resumed by anybody before the job done .
- 5.As regards to the defective products . Please consult the authorized department or retailers .

## Method of installation:

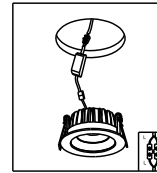
1. Please turn off the power supply firstly .



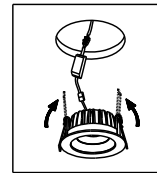
2. Making the cut-out at the proper position of ceiling against the dimension of the mounting frame .



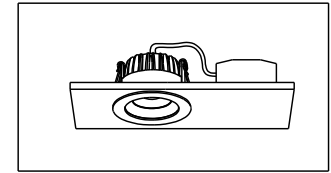
3. Connect the power supply and the lighting fixture well. For the specific connection method, please refer to the corresponding ABCD connection method in <connection method>.



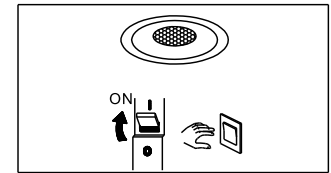
4. Pull up the springs on both sides and place them into the ceiling cut holes .



5. Please make sure the lighting fixture is installed .



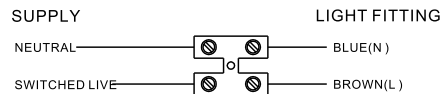
6. Turn on the light switch to see if it lights up effectively .



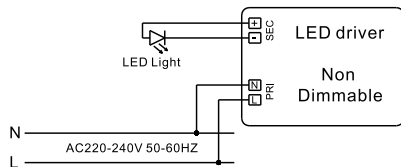
## Connecting method:

Please connect the power cord properly as shown by the drawing.

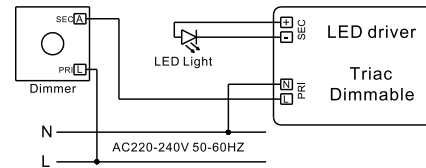
- Wiring diagram A:  
( Product input port wiring diagram )



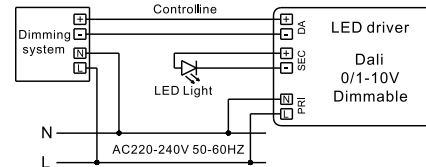
- Wiring diagram B:  
( Product internal wiring diagram )



- Wiring diagram C:  
( External dimmer & product wiring diagram )



- Wiring diagram D:  
( Intelligent dimming system & internal wiring diagram of the product )



## Installation checking:

- 1.Please make sure you have selected the correct type of wire .
- 2.Please make sure the connection is correct and firmed ,also make sure there is no cable left outside of the terminal .
- 3.The exposed area must be wrapped by double insulator in order to prevent any leakage .

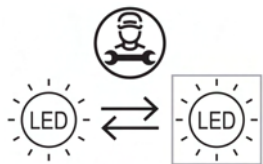
## Hygiene & safety:

- 1.For your safety , please cut off the power supply before changing or cleaning the lamp source .
- 2.Advise you to use the soft dry cloth to clean up and do not attempt to use any chemical agent in order to avoid any damages from the surface.

## Signs illustration:

- Lighting safety standards: Indicates the lighting fixture conforms to European Community lighting safety standards .
- Environmental sign: Indicates the materials of lighting fixture conform to the ROHS standard .
- Applicable site sign: Indicates that the lamp is suitable for indoor and outdoor lighting .
- Installation sign: Indicates that the lamp can be installed on "general flammable surface" .
- Lighting fixture type sign: This sign indicates this lighting fixture belongs to I type , the body of lighting fixture need to contact the earth .

- Lighting fixture type sign: This sign indicates this lighting fixture belongs to II type , the body of lighting fixture need not contact the earth .
- Lighting fixture type sign: This sign indicates this lighting fixture belongs to III type , the body of lighting fixture need not contact the earth .
- Protection rating sign: This icon is dustproof rating 2 ; waterproof rating 0 , non waterproof .
- Protection rating sign: This icon is dustproof rating 4 ; waterproof rating 4 .
- Protection rating sign: This icon is dustproof rating 6 ; waterproof rating 5 .
- Distance sign: Indicates the distance from the light source to the illuminated object .
- Warning: Do not cover the lighting fixtures with thermal insulation pads or similar materials.



Nederlands : Alleen te vervangen door een erkend elektricien.

English: To be replaced only by a qualified electrician.

Deutsch: Darf nur von einem qualifizierten Elektriker ausgetauscht werden.



## Nederlands: Instructies voor het vervangen van de LED chip/lichtbron:

1. Verwijder de twee schroeven aan beide zijdes uit de inbouwspot en schuif de buitenste ring er af.
2. Verwijder de twee schroeven uit de achterzijde van de inbouwspot en haal vervolgens de lens voor de LED-chip weg.
3. Maak de draden los met behulp van een soldeerbout en verwijder de lijm rondom de LED-chip met behulp van gereedschap. Verwijder vervolgens de LED-chip met behulp van gereedschap.

Draai/zet na het vervangen van de LED-chip alles in omgekeerde volgorde weer vast.

## English: Instructions for replacing the LED chip/light source:

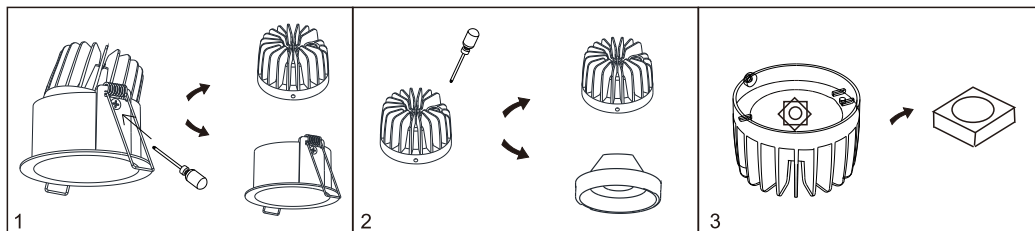
1. Remove the two screws on both sides from the recessed spot and slide the outer ring off.
2. Remove the two screws from the back of the recessed spot and then remove the lens for the LED chip.
3. Disconnect the wires using a soldering iron and remove the glue around the LED chip using tools. Then remove the LED chip using tools.

After replacing the LED-chip, tighten/fix everything in reverse order.

## Deutsch: Anleitung zum Austausch des LED-Chips/Lichtquelle:

1. Entfernen Sie die beiden Schrauben auf beiden Seiten von der Einbaustrahler und schieben Sie den Außenring ab.
2. Entfernen Sie die beiden Schrauben von der Rückseite des Einbaustrahlers und entfernen Sie anschließend die Linse für den LED-Chip.
3. Trennen Sie die Drähte mit einem LötKolben und entfernen Sie den Kleber um den LED-Chip mit Hilfe von Werkzeugen. Anschließend den LED-Chip mit Werkzeug entfernen.

Nach dem Austausch des LED-Chips alles in umgekehrter Reihenfolge festdrehen/fixieren.



## Nederlands: Instructies voor het vervangen van de LED chip/lichtbron:

1. Verwijder de twee schroeven aan beide zijdes uit de inbouwspot en schuif de buitenste ring er af.
2. Verwijder de lens voor de LED-chip door deze er af te draaien. Verwijder vervolgens de twee schroeven naast de LED-chip en verwijder de witte ring rondom de LED-chip.
3. Maak de draden los met behulp van een soldeerbout en verwijder vervolgens de LED-chip met behulp van gereedschap.

Draai/zet na het vervangen van de LED-chip alles in omgekeerde volgorde weer vast.

## English: Instructions for replacing the LED chip/light source:

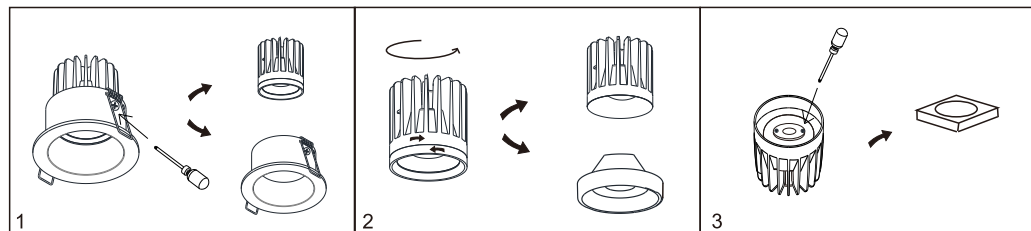
1. Remove the two screws on both sides from the recessed spot and slide the outer ring off.
2. Remove the lens for the LED chip by twisting it off. Then remove the two screws next to the LED chip and remove the white ring around the LED chip.
3. Disconnect the wires using a soldering iron, then remove the LED chip using tools.

After replacing the LED-chip, tighten/fix everything in reverse order.

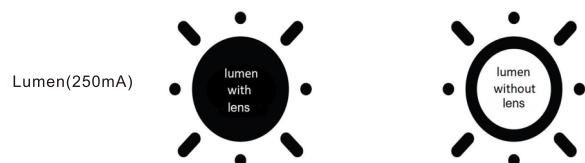
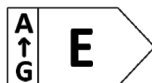
## Deutsch: Anleitung zum Austausch des LED-Chips/Lichtquelle:

1. Entfernen Sie die beiden Schrauben auf beiden Seiten von der Einbaustrahler und schieben Sie den Außenring ab.
2. Entfernen Sie die Linse für den LED-Chip durch diese ab zu drehen. Entfernen Sie dann die beiden Schrauben neben dem LED-Chip und entfernen Sie den weißen Ring um den LED-Chip.
3. Trennen Sie die Drähte mit einem LötKolben und entfernen dann den LED-Chip mit Werkzeugen.

Nach dem Austausch des LED-Chips alles in umgekehrter Reihenfolge festdrehen/fixieren.



Nederlands: Dit product bevat een lichtbron van energie-efficiëntieklasse  
English: This product contains a light source of energy efficiency Class  
Deutsch: Dieses Produkt enthält eine Lichtquelle der Energieeffizienzklasse



Lumen(250mA)	lumen with lens	lumen without lens
DL 1210	1120lm	1165lm
DL R6960	1030lm	1070lm
IBS R6215	1030lm	1070lm

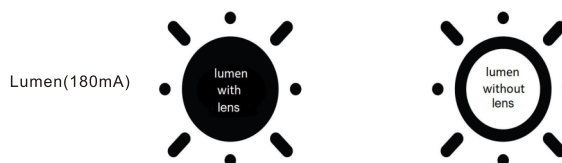
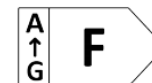


DL 1210  
DL R6960



IBS R6215

Nederlands: Dit product bevat een lichtbron van energie-efficiëntieklasse  
English: This product contains a light source of energy efficiency Class  
Deutsch: Dieses Produkt enthält eine Lichtquelle der Energieeffizienzklasse



Lumen(180mA)	lumen with lens	lumen without lens
DL 2108-2208	805lm	855lm
DL 2308-2408	668lm	720lm
DL 2508-2608	805lm	855lm
DL 2708-2808	773lm	810lm



DL 2108  
DL 2208  
DL 2308  
DL 2408

DL 2508  
DL 2608  
DL 2708  
DL 2808